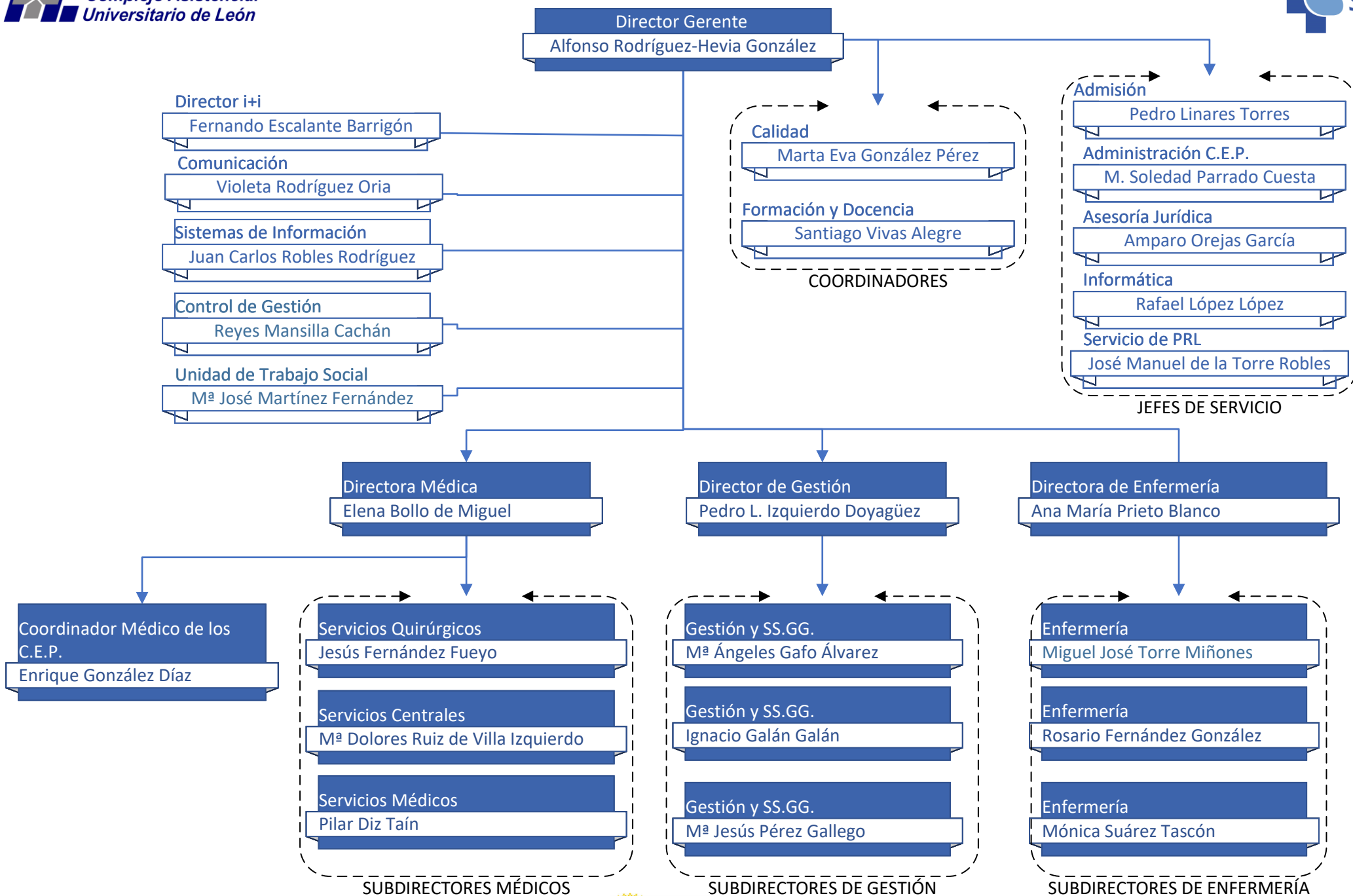
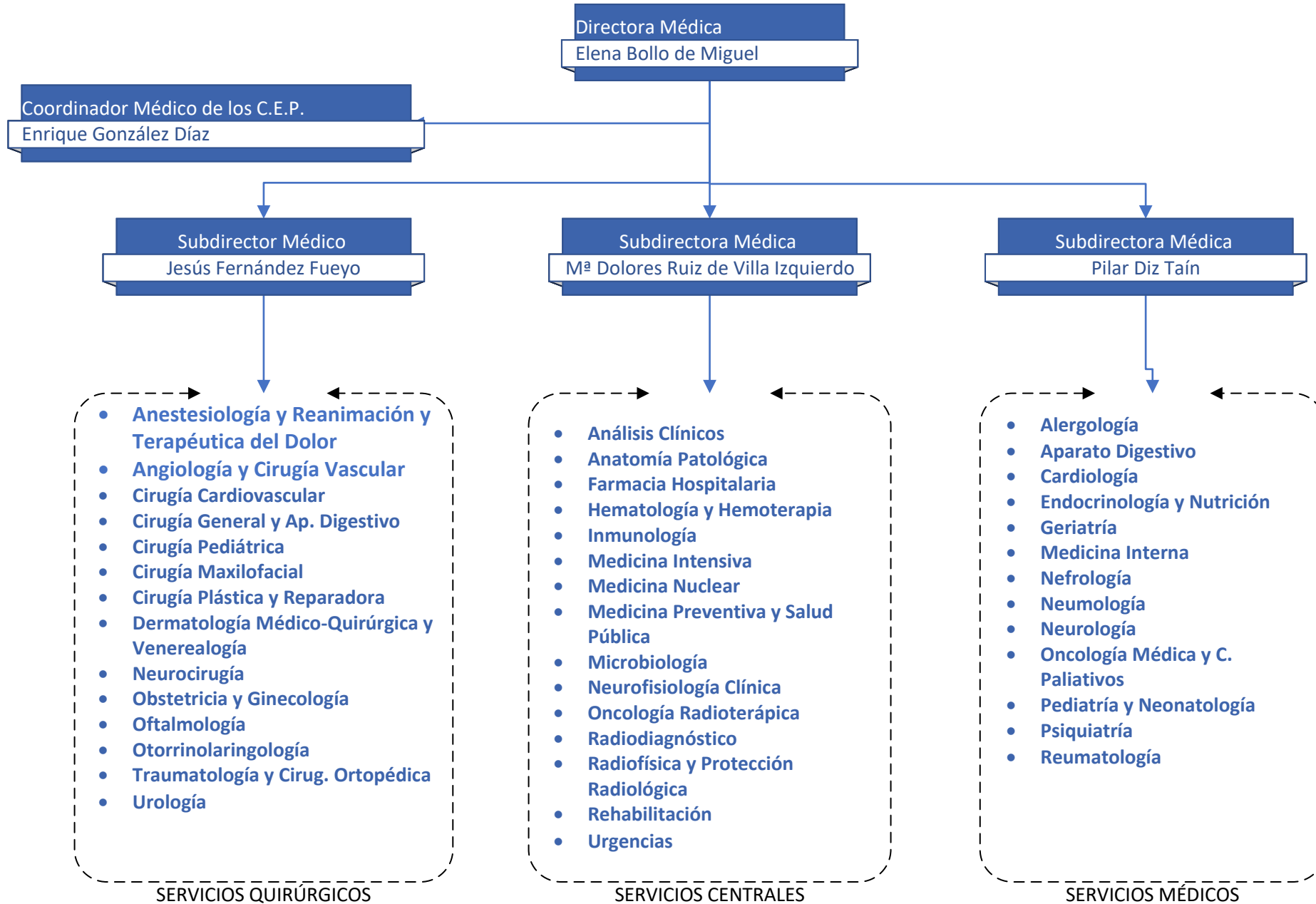
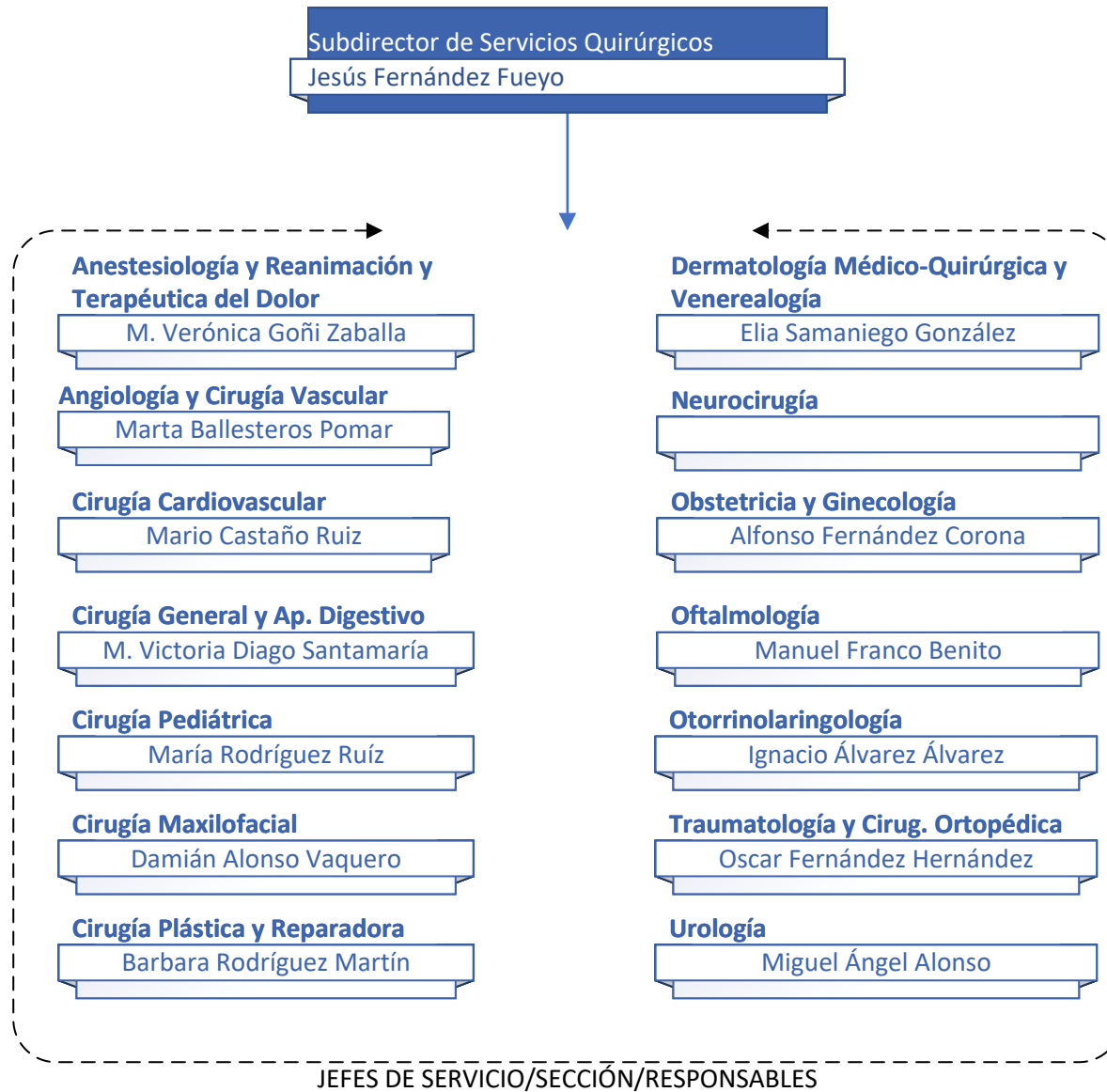
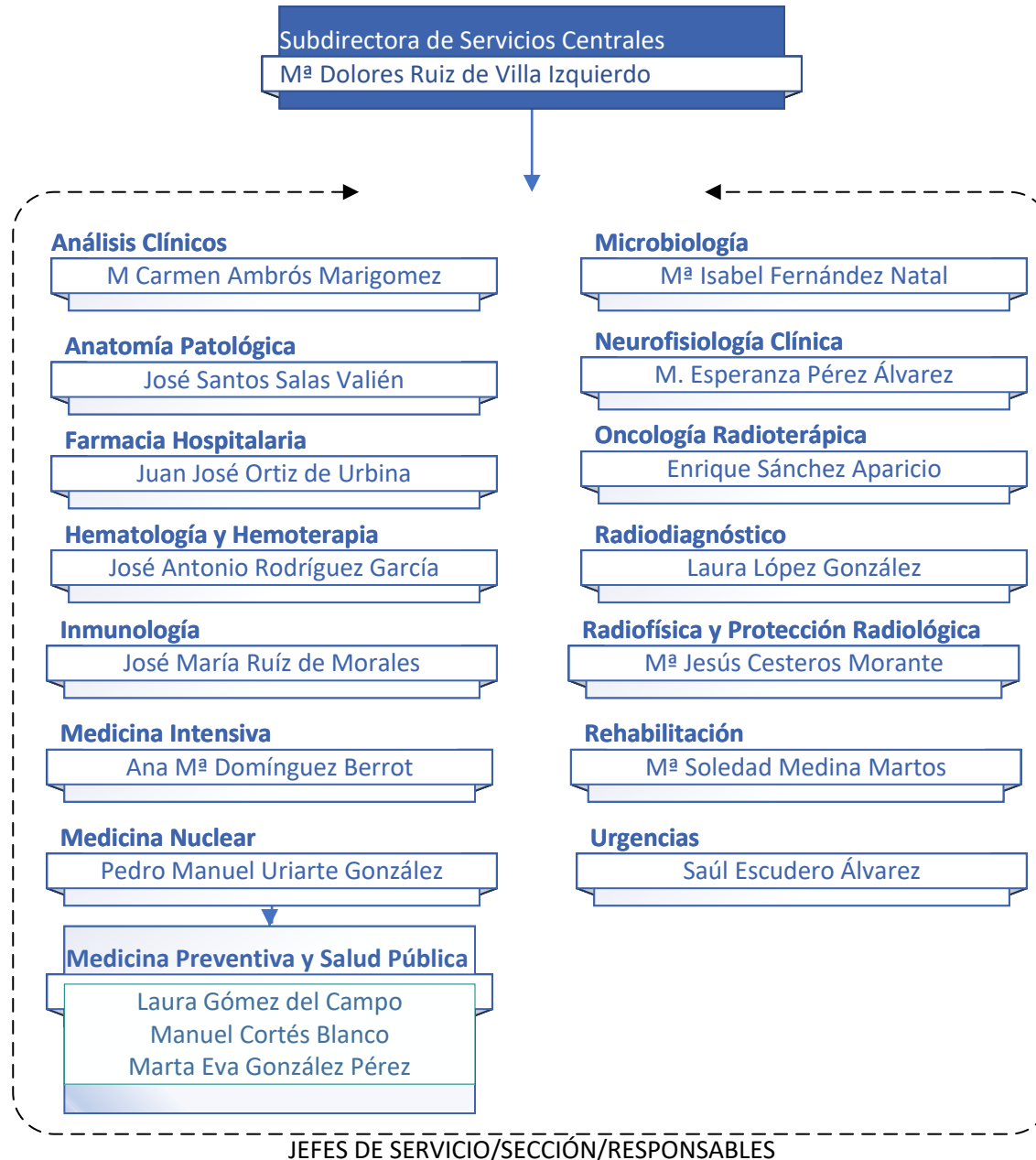


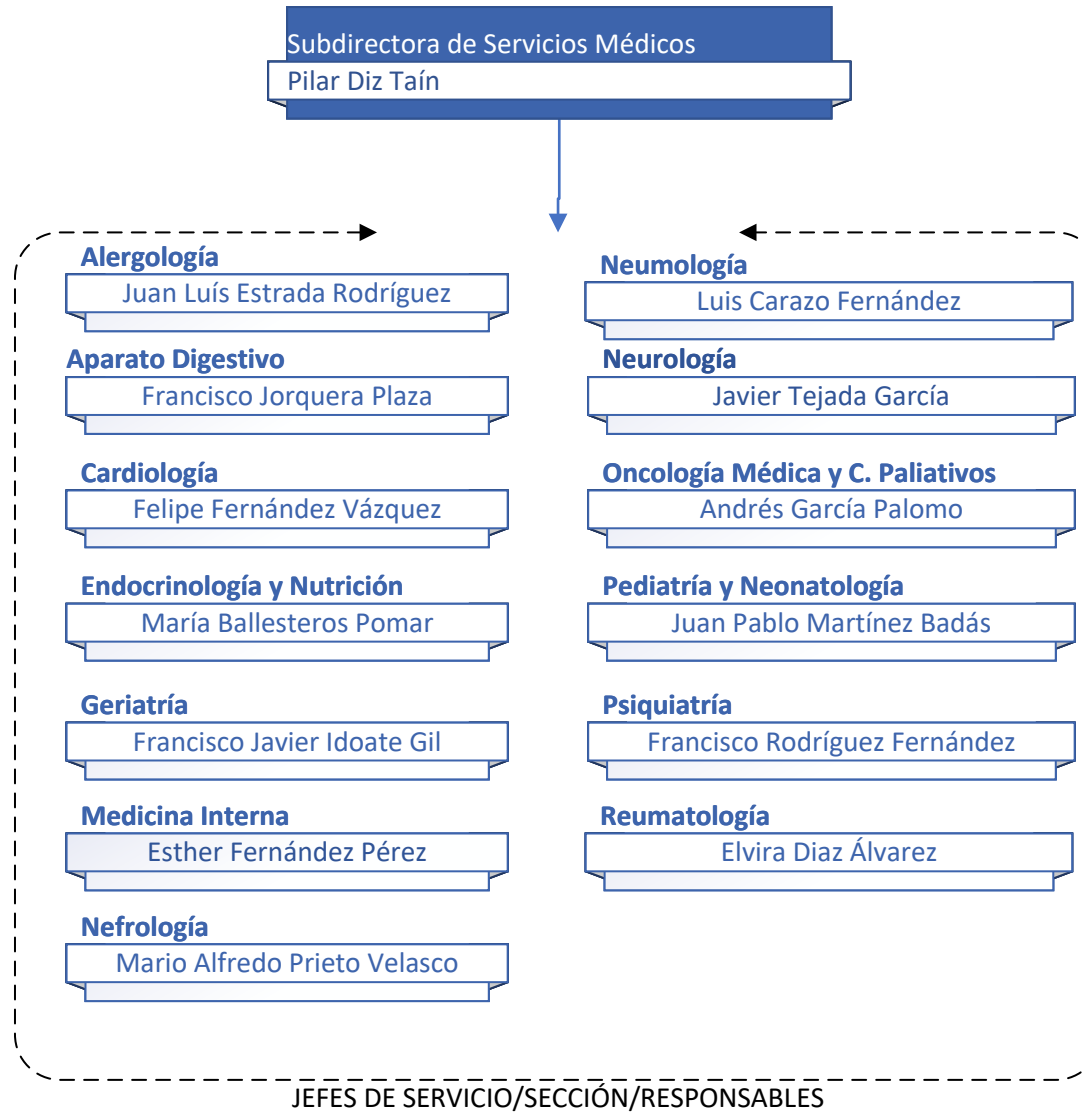
## ORGANIGRAMA DIRECCIÓN GERENCIA









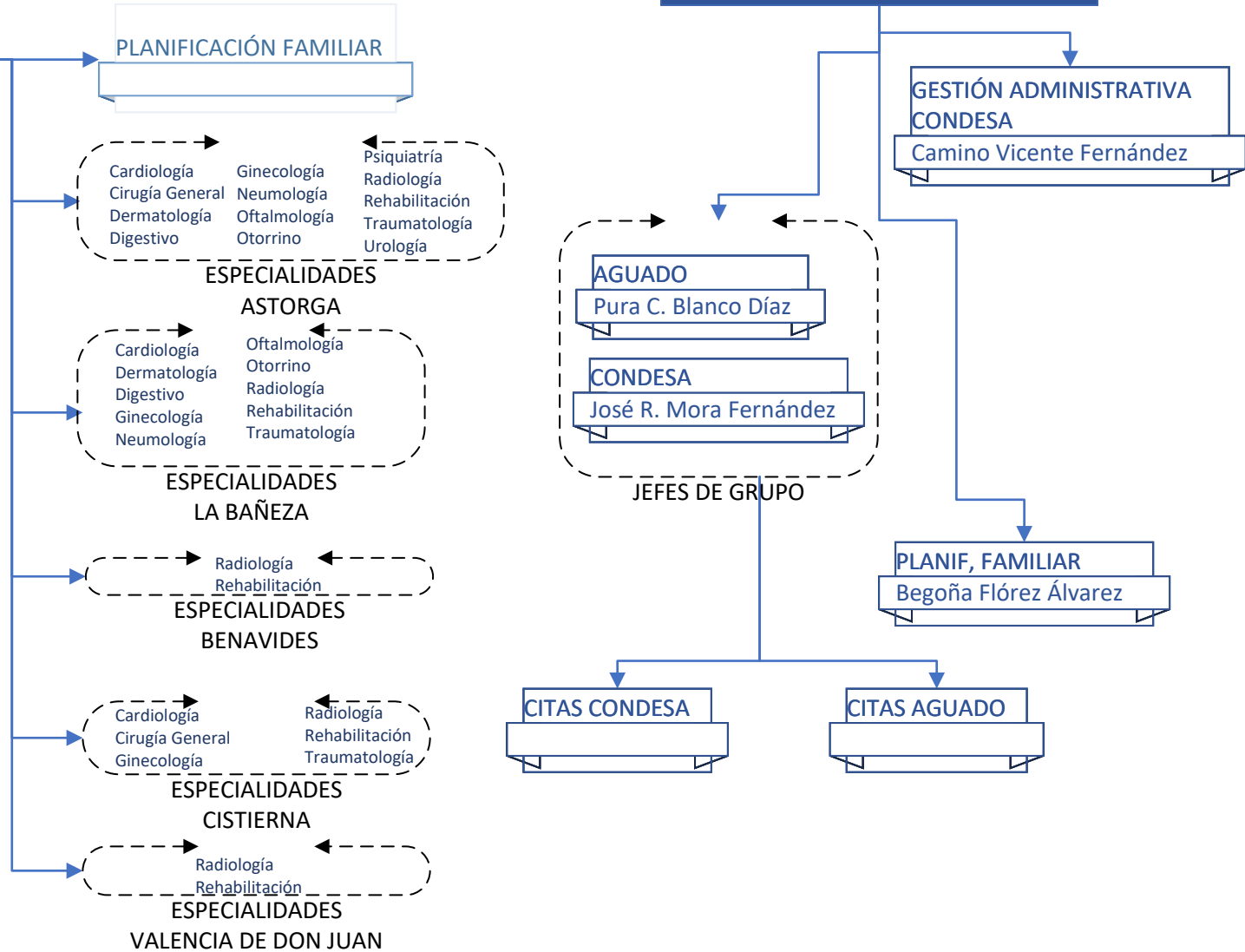


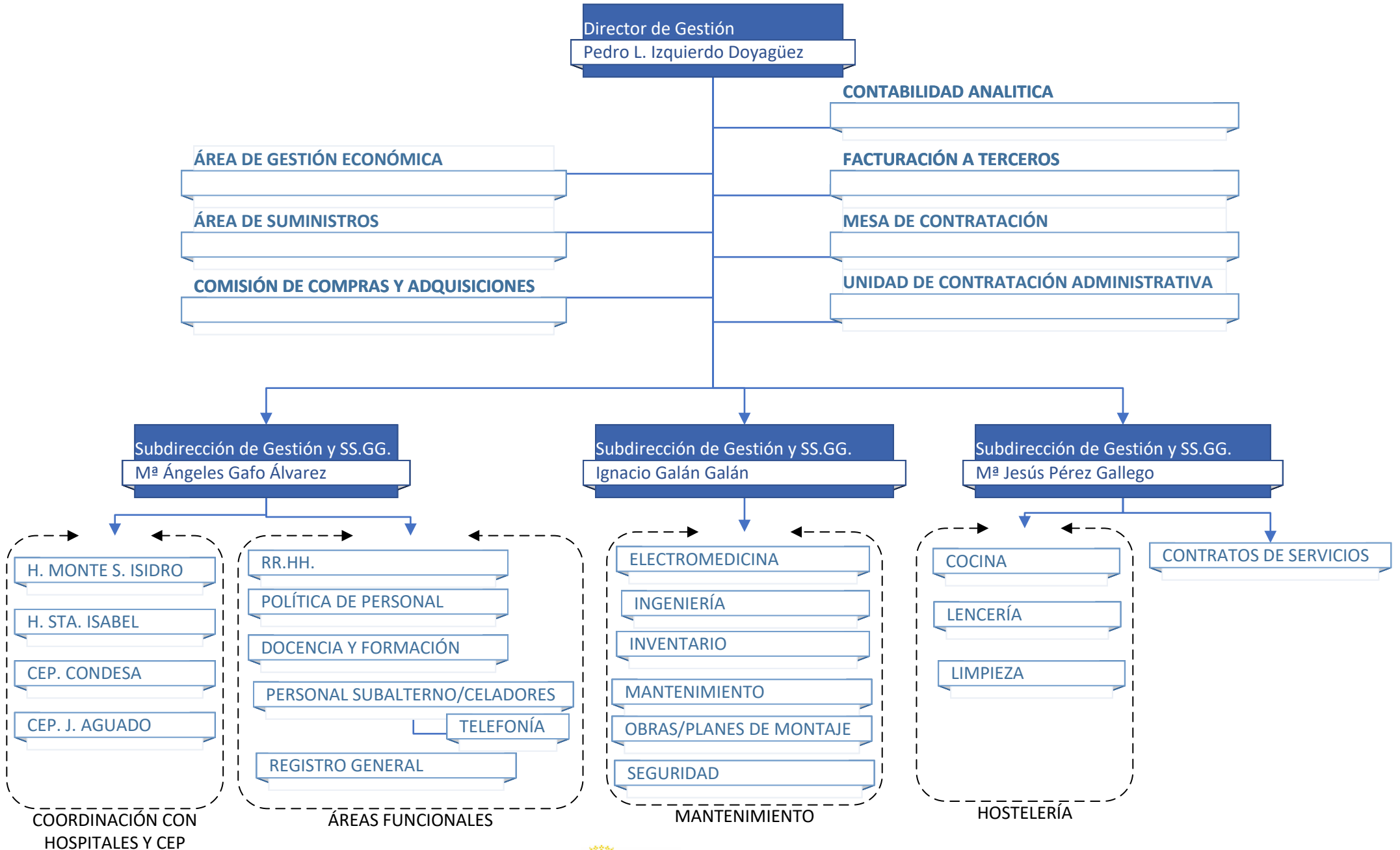
**Coordinador Médico de los C.E.P.  
Enrique González Díaz**

**Jefe de Servicio Administrativo CEP  
M. Soledad Parrado Cuesta**

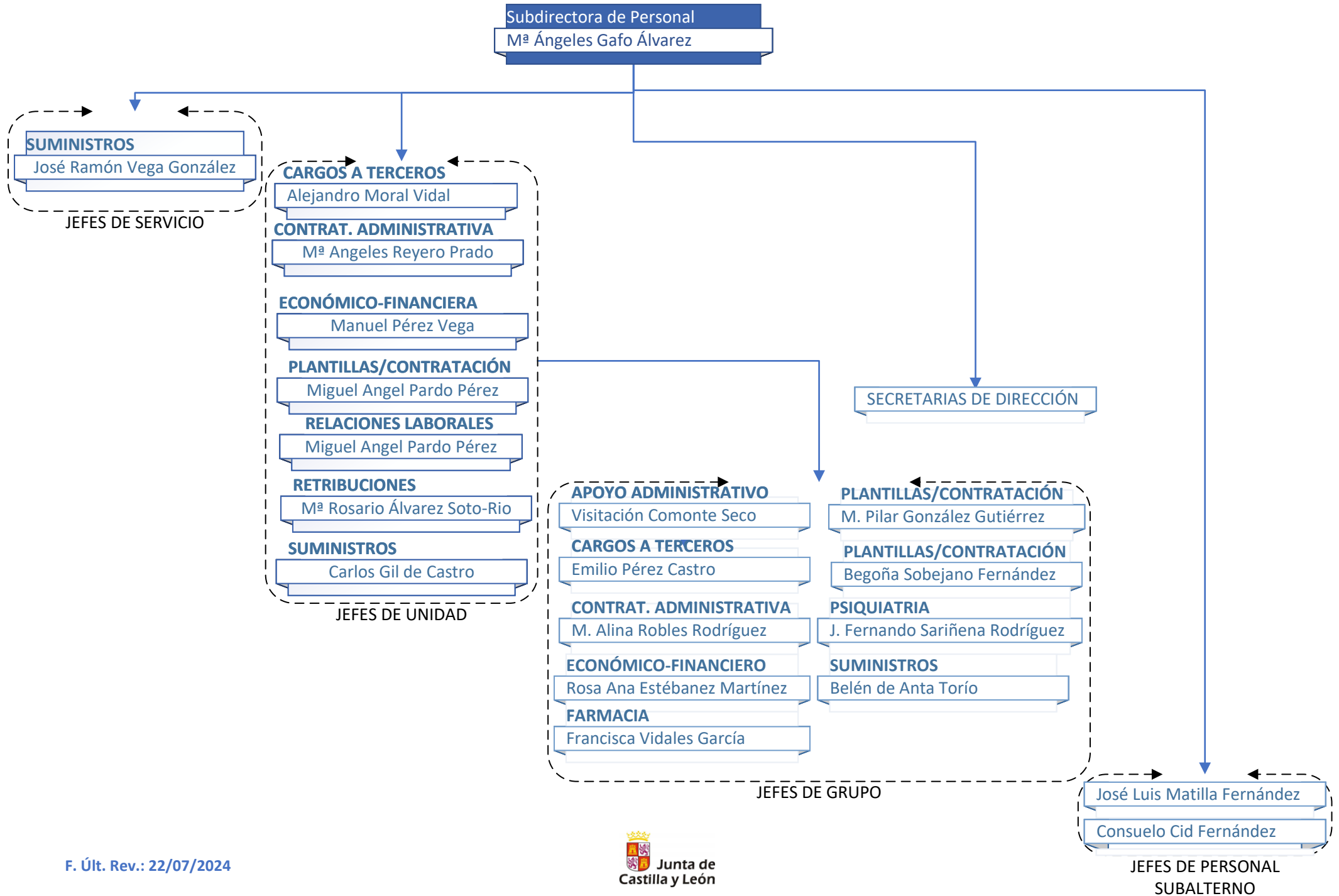


F. Últ. Rev.: 22/07/2024

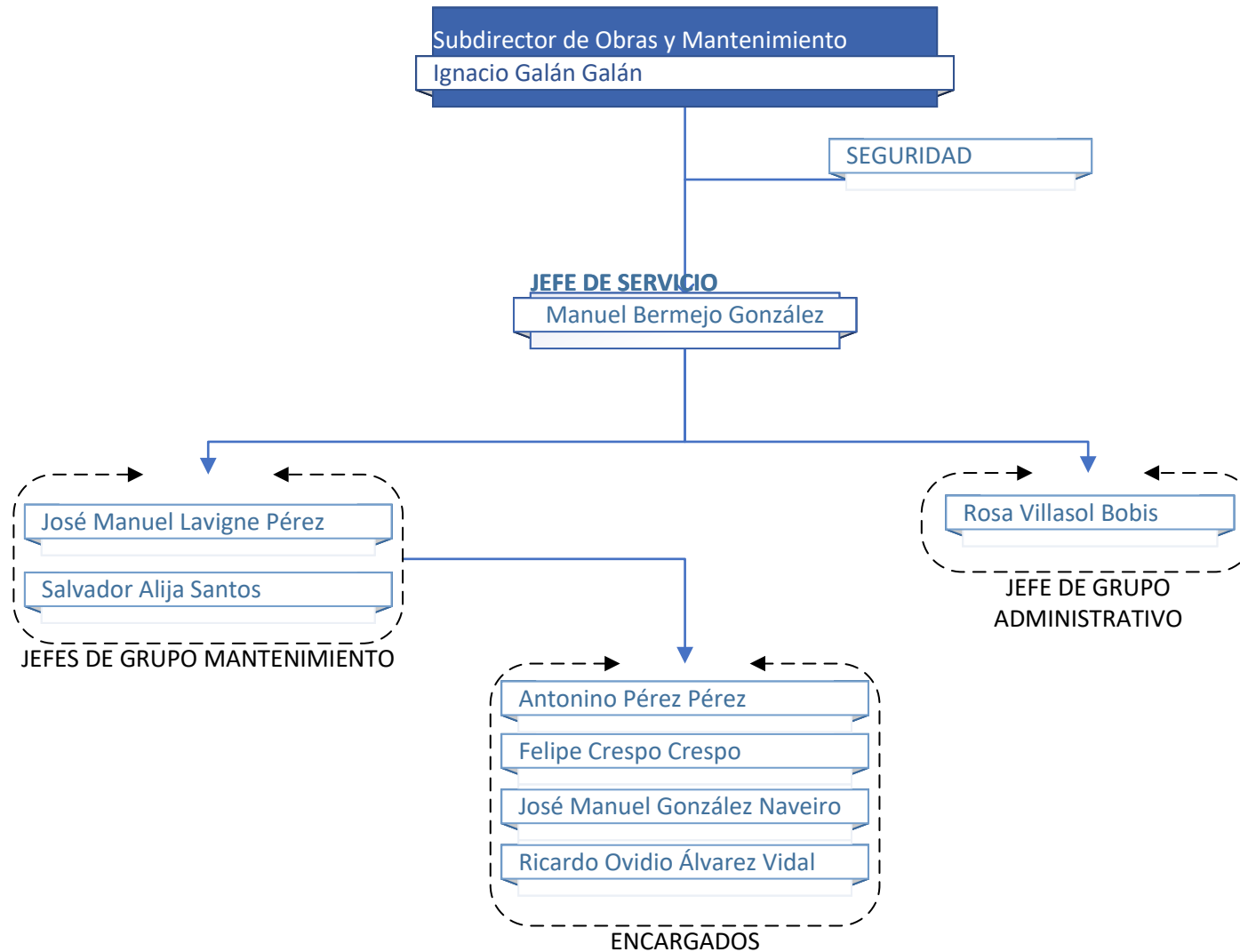


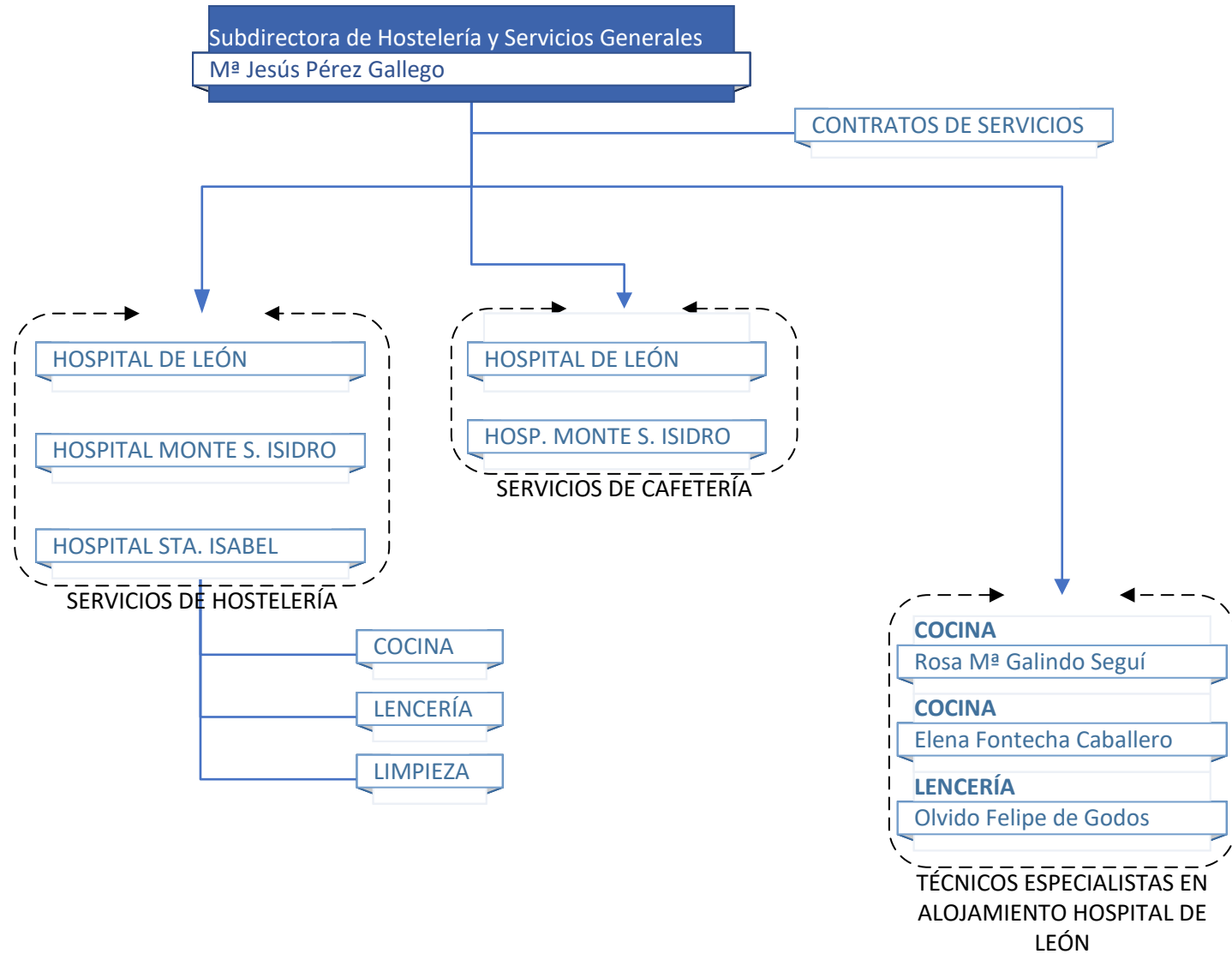


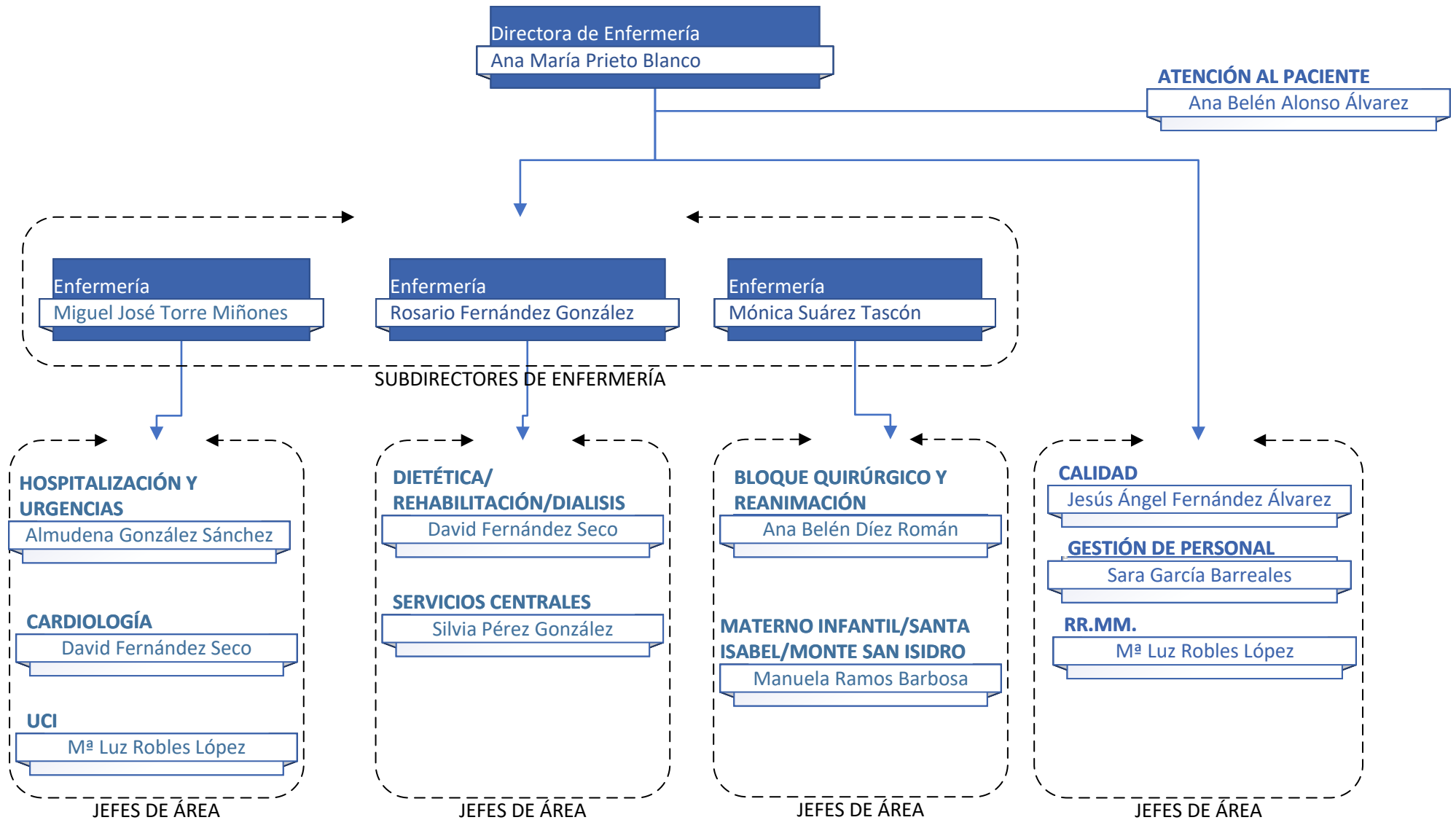
## ORGANIGRAMA DE LA SUBDIRECCIÓN DE GESTIÓN - PERSONAL

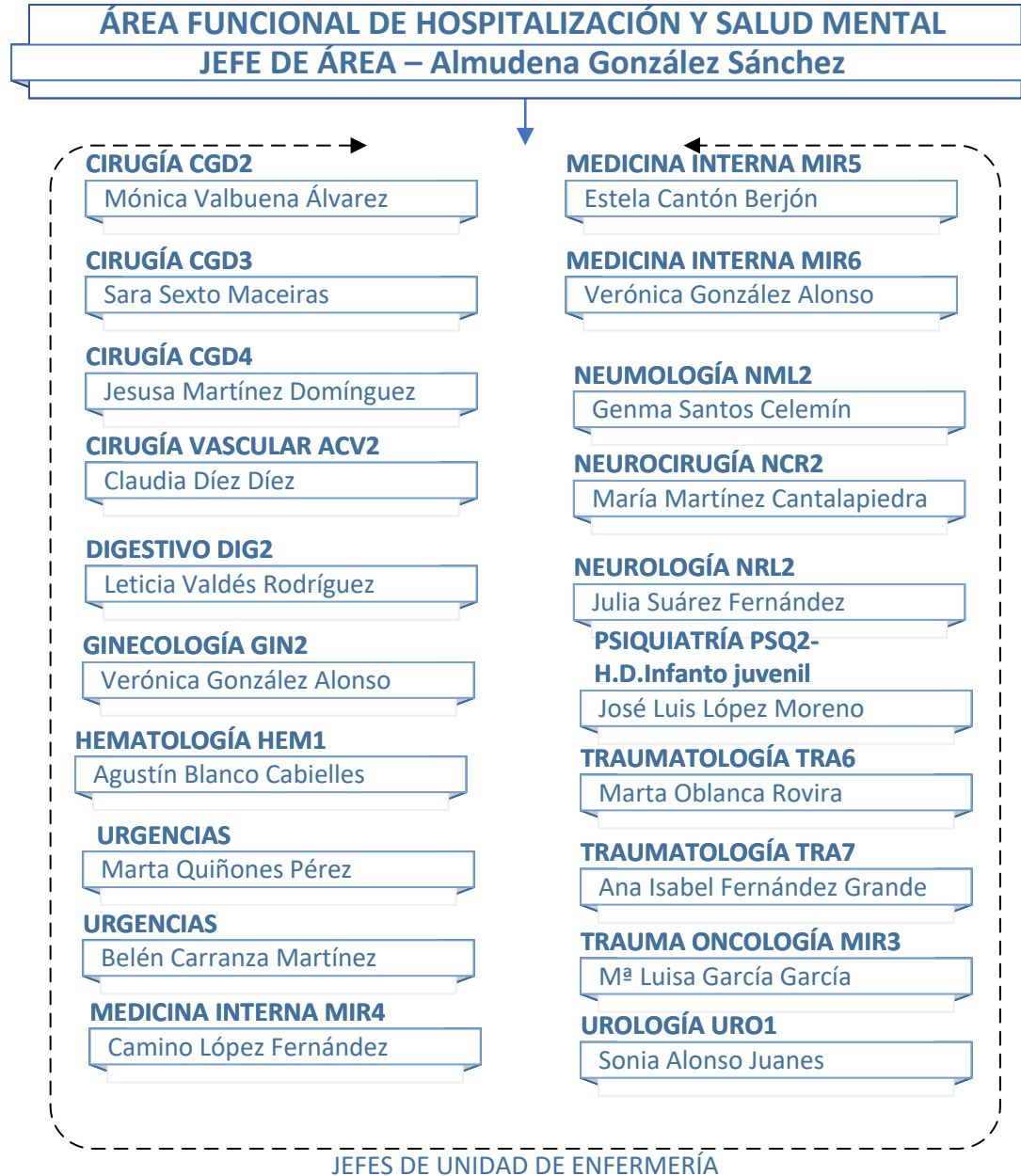


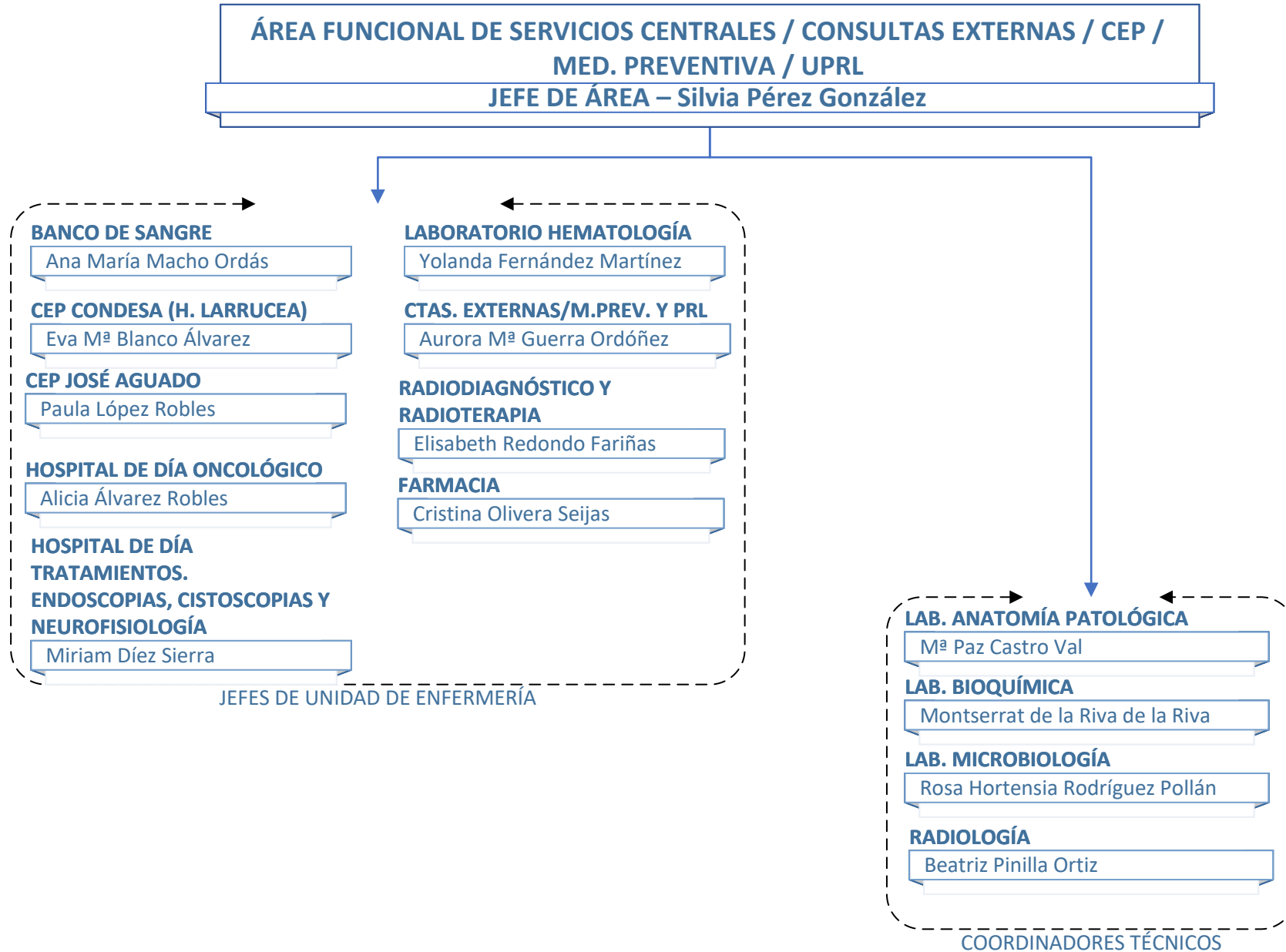


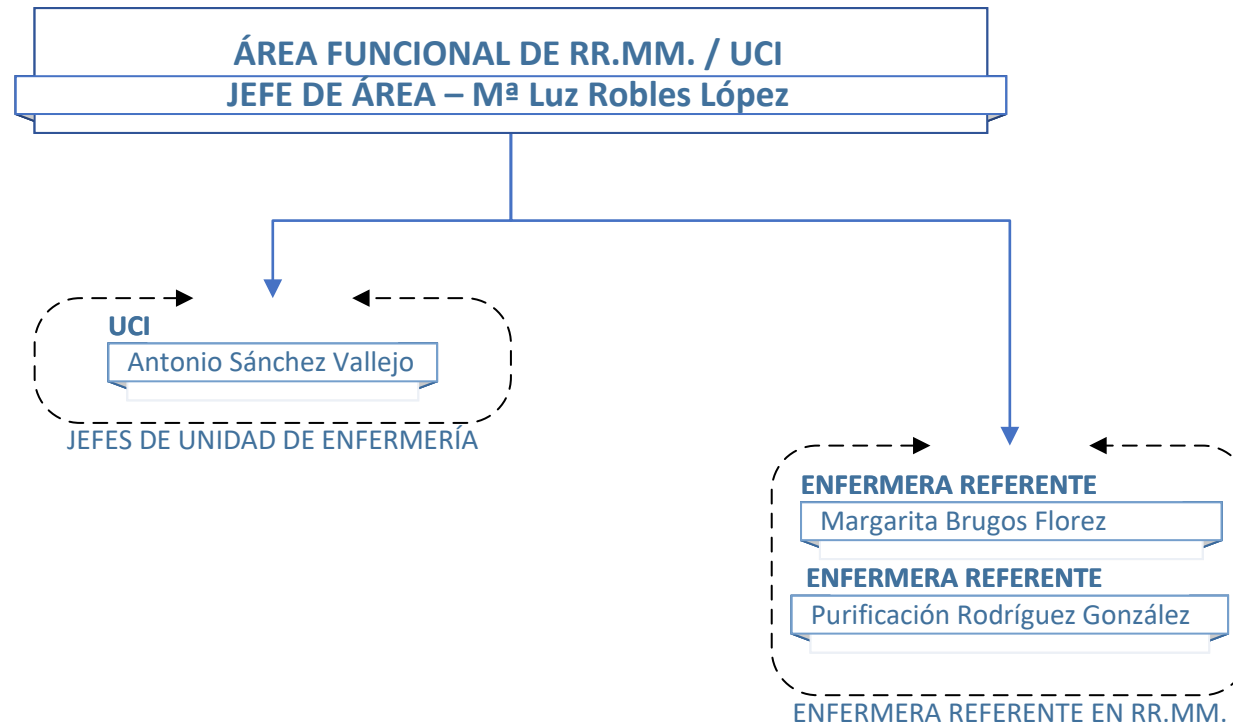


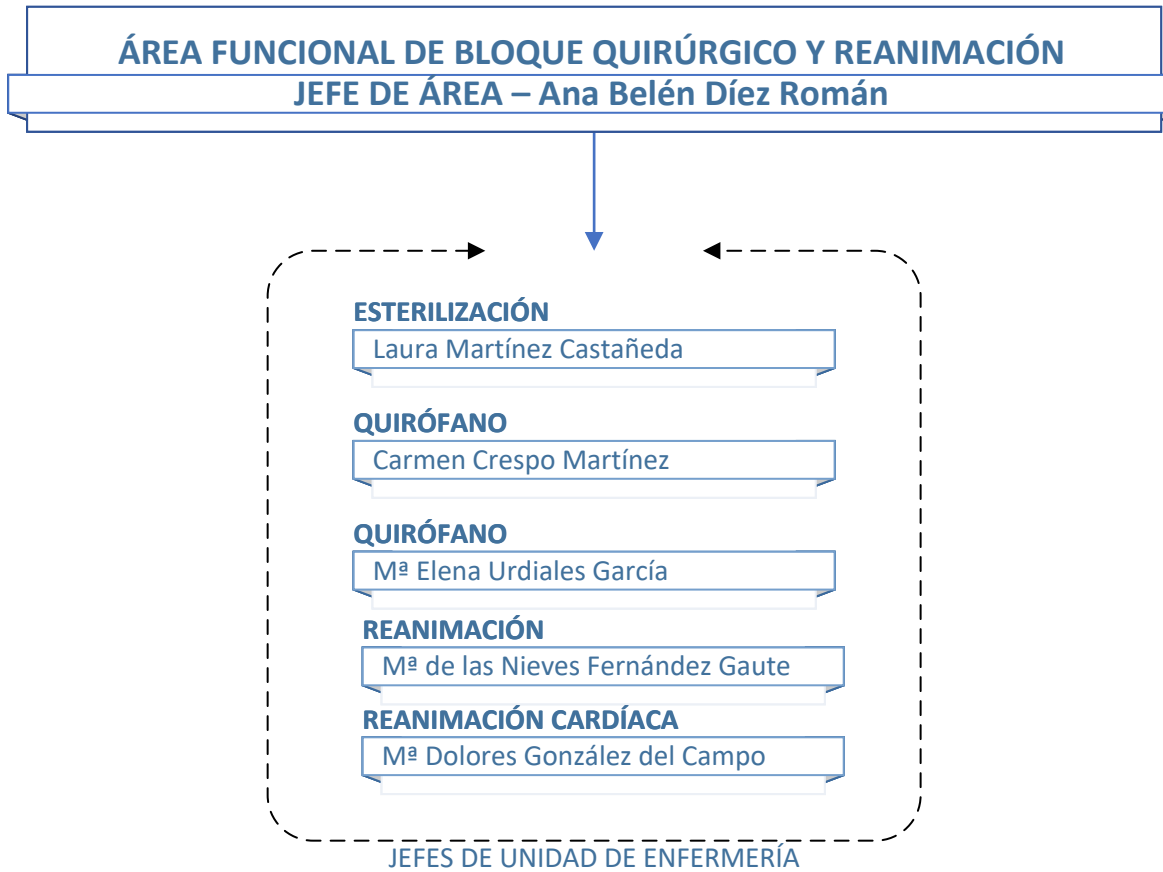












**ÁREA FUNCIONAL MATERNO INFANTIL / SANTA ISABEL / MONTE SAN ISIDRO**  
**JEFE DE ÁREA – Manuela Ramos Barbosa**





