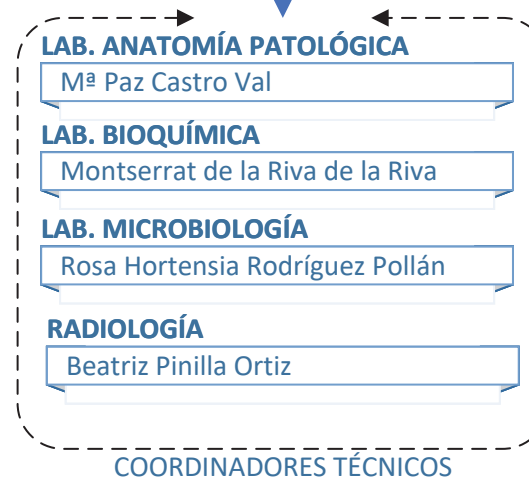
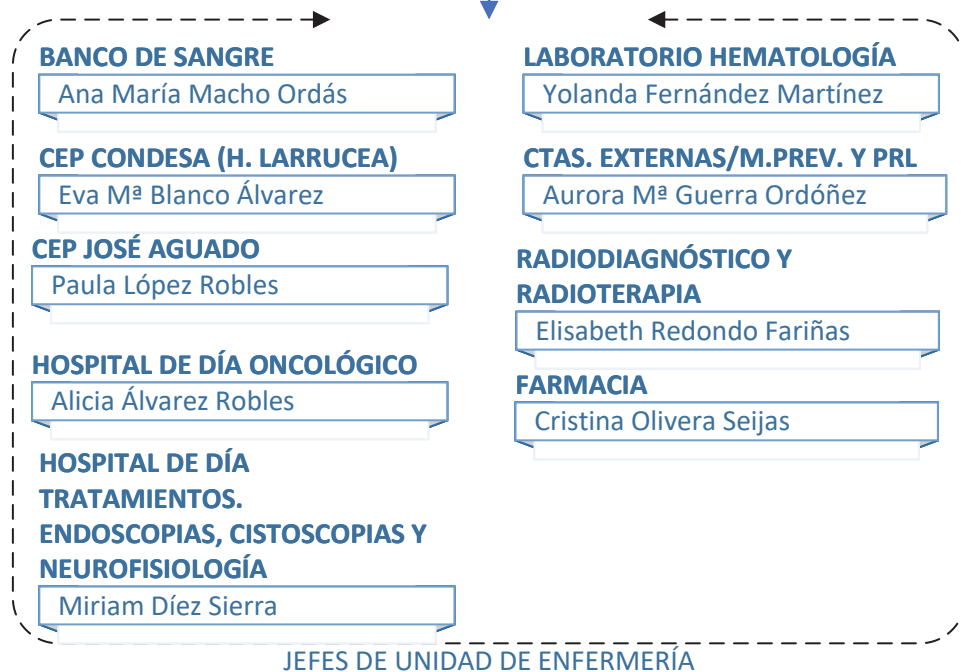
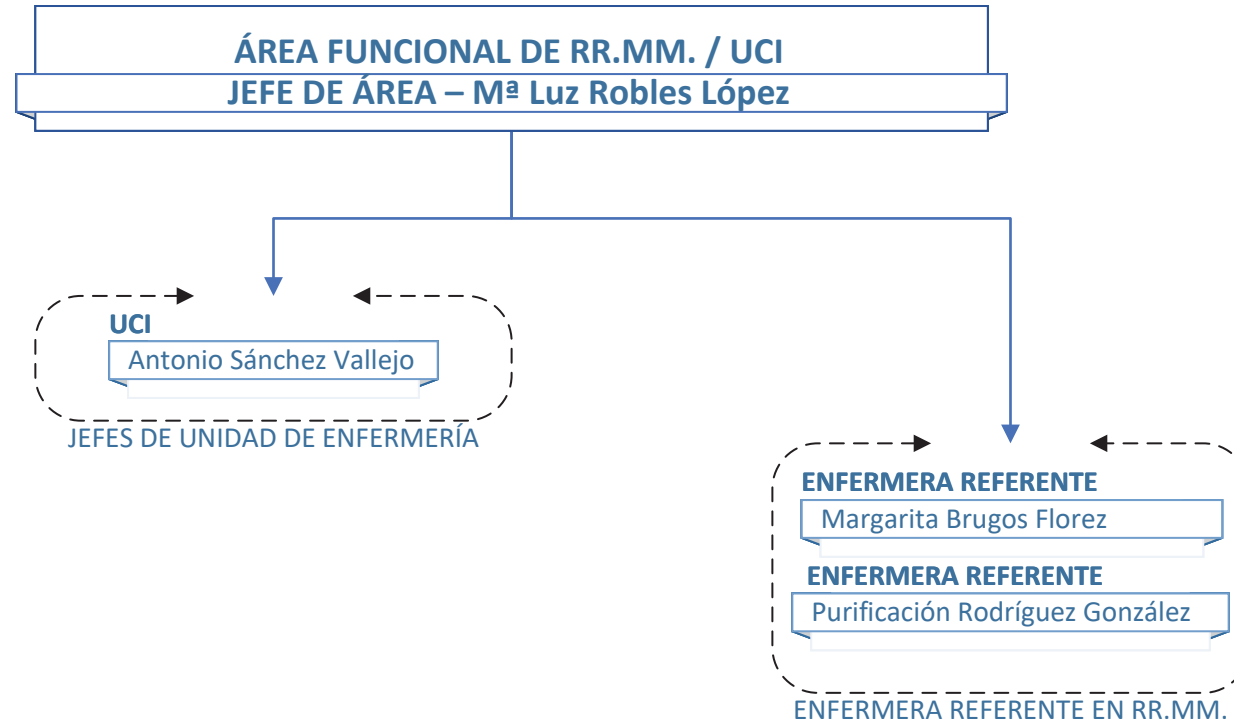
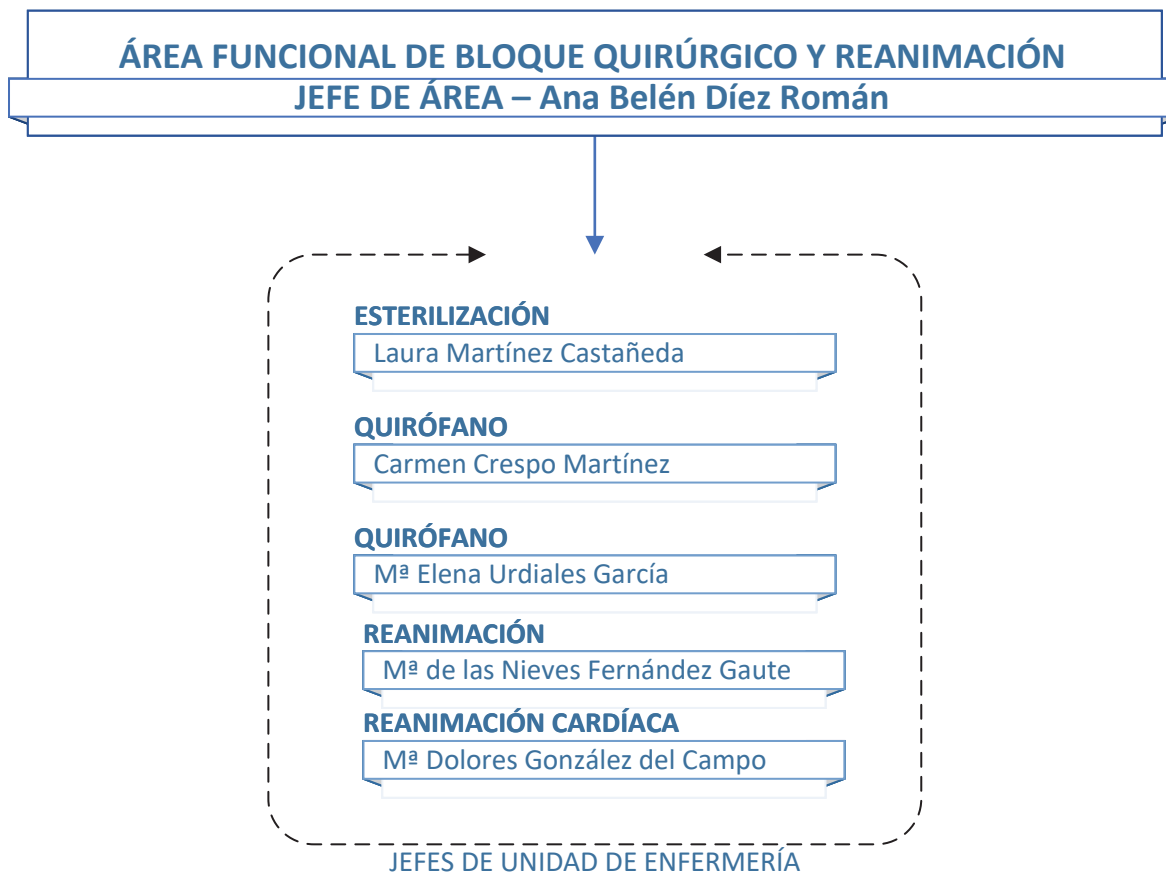


**ÁREA FUNCIONAL DE SERVICIOS CENTRALES / CONSULTAS EXTERNAS / CEP /
MED. PREVENTIVA / UPRL**
JEFE DE ÁREA – Silvia Pérez González







ÁREA FUNCIONAL MATERNO INFANTIL / SANTA ISABEL / MONTE SAN ISIDRO
JEFE DE ÁREA – Manuela Ramos Barbosa



